



SAMSKRUTI COLLEGE OF PHARMACY

(Sponsored by St. VINCENT EDUCATIONAL SOCIETY)

Regd No 5782/2000

(Approved by AICTE, PCI, New Delhi and Affiliated to JNTU, Hyderabad)

Kondapur Village, Ghatkesar Mandal, Medchal District (Old R.R. Dist)- 501 301.

Cell : 9701368996,



7.1.3 - Facilities in the Institution for the management of the following types of degradable and non-degradable waste:

GEO TAGGED PHOTOGRAPHS OF THE FACILITIES

1. Solid waste management:



Principal

Samskruti College of Pharmacy,
Kondapur (V), Ghatkesar (M),
Medchal Dist. PIN-501301

www.samskruti.edu



SAMSKRUTI COLLEGE OF PHARMACY

(Sponsored by St. VINCENT EDUCATIONAL SOCIETY)

Regd. No 5782/2000

(Approved by AICTE, PCI, New Delhi and Affiliated to JNTU, Hyderabad)

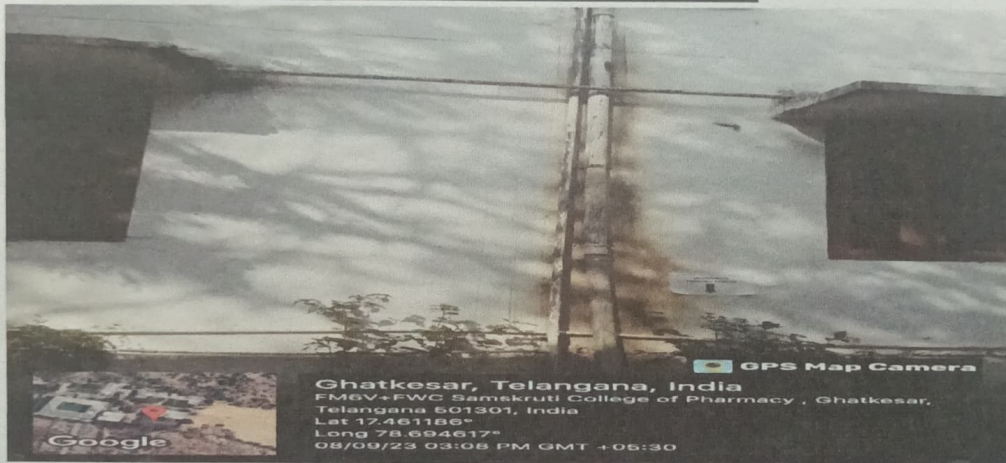
Kondapur Village, Ghatkesar Mandal, Medchal District (Old R.R. Dist)- 501 301.

Cell : 9701368996,



2. Liquid waste management:

Liquid Waste Carrying Pipelines And Pit



Principal

Samskruti College of Pharmacy
Kondapur (V), Ghatkesar (M),
Medchal Dist. PIN-501301

www.samskruti



SAMSKRUTI COLLEGE OF PHARMACY

(Sponsored by St. VINCENT EDUCATIONAL SOCIETY)

Regd No 5782/2000

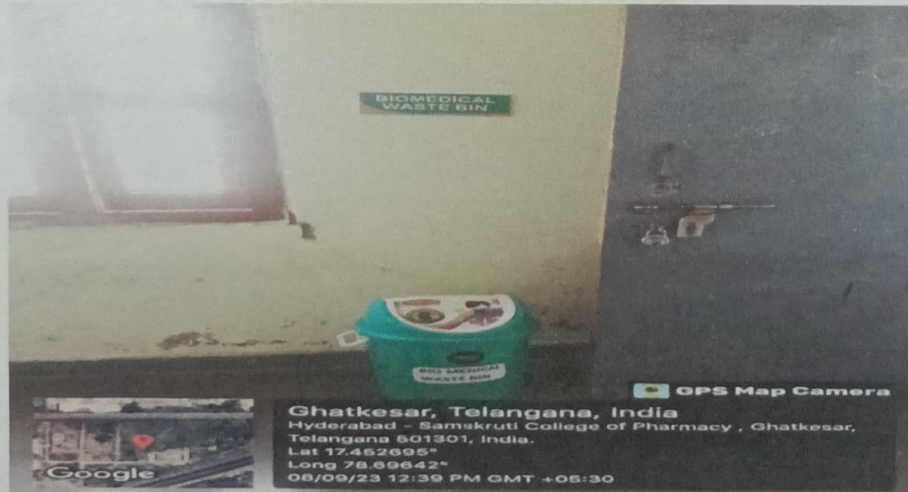


(Approved by AICTE, PCI, New Delhi and Affiliated to JNTU, Hyderabad)

Kondapur Village, Ghatkesar Mandal, Medchal District (Old R.R. Dist)- 501 301.

Cell : 9701368996,

3. Biomedical waste management:



Handwritten signature

Principal

Samskruti College of Pharmacy
Kondapur (V), Ghatkesar (M),
Medchal Dist. PIN-501301



SAMSKRUTI COLLEGE OF PHARMACY

(Sponsored by St. VINCENT EDUCATIONAL SOCIETY)

Regd. No. 5782/2000

(Approved by AICTE, PCI, New Delhi and Affiliated to JNTU, Hyderabad)

Kondapur Village, Ghatkesar Mandal, Medchal District (Old R.R. Dist)- 501 301.

Cell : 9701368996,



4. E- waste management:



Handwritten signature

Principal

Samskruti College of Pharmacy
Kondapur (V), Ghatkesar (M),
Medchal Dist. PIN-501301

www.samskruti



SAMSKRUTI COLLEGE OF PHARMACY

(Sponsored by St. VINCENT EDUCATIONAL SOCIETY)

Regd. No. 5782/2000

(Approved by AICTE, PCI, New Delhi and Affiliated to JNTU, Hyderabad)

Kondapur Village, Ghatkesar Mandal, Medchal District (Old R.R. Dist)-501 301.

Cell : 9701368996,



5. Chemical waste management:



Principal

Samskruti College of Pharmacy

Kondapur (V), Ghatkesar (M)

Medchal Dist. PIN-501301



PRINCIPAL

Samskruti College of Pharmacy

Kondapur (V), Ghatkesar (M),

Medchal Dist. PIN-501301